

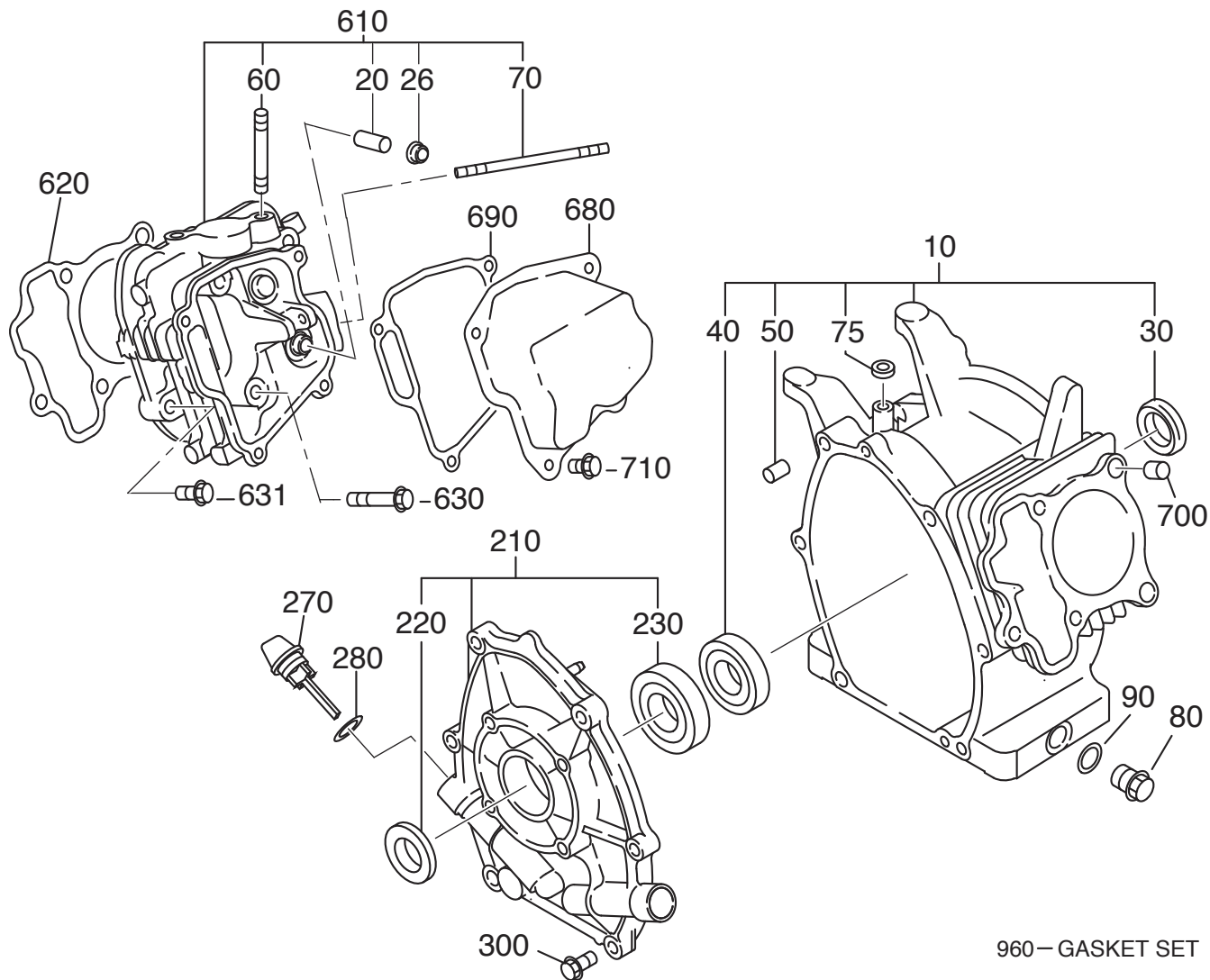


# MODEL **KX21** PARTS CATALPG

Spec.No.EX210KS8030

2010.06

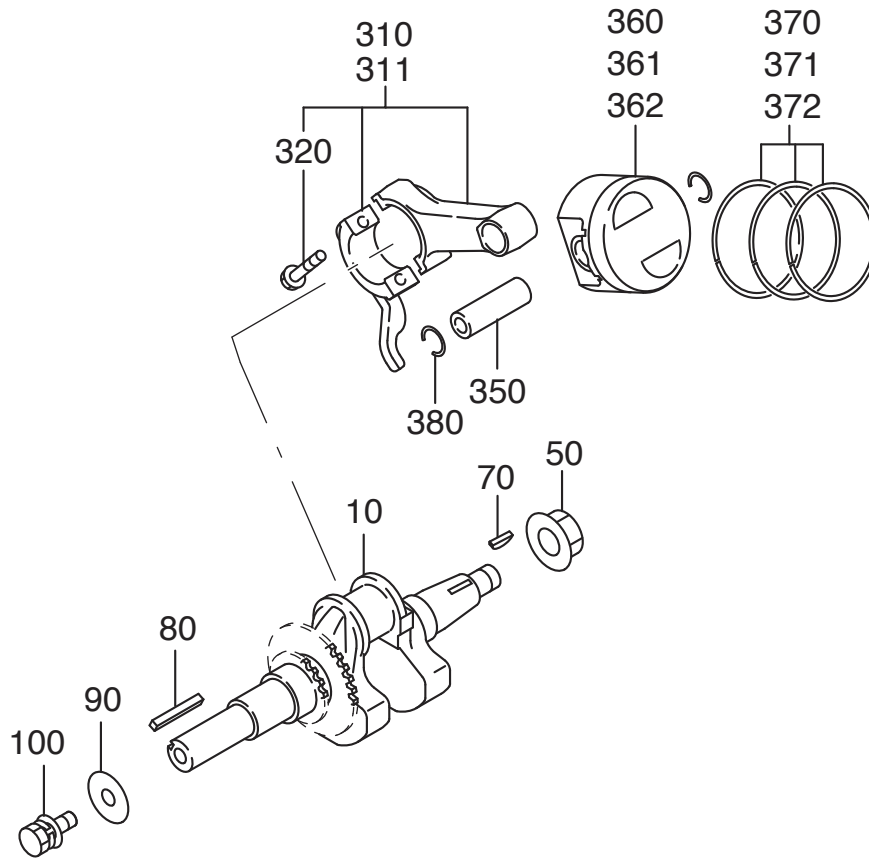




1. CRANK CASE

REF.	PART NUMBER	PART NAME	QTY	REMARKS	CODE NO.	INTERCHANGE P/NO.	UNIT P
10	278-10101-41	CRANK CASE CP	1		-		31,080
20	237-14202-03	VALVE GUIDE	2	5. 5DX9. 5DX27L	-		1,260
26	277-16010-01	STEM SEAL	1	5. 5DX9. 5DX15DX7. 8B	-		231
30	044-02502-00	OIL SEAL	1	25DX38DX7B	-		473
40	060-02800-21	BALL BEARING	1	28DX58DX16B	-		1,008
50	277-15011-03	PIPE KNOCK	2	10. 3DX8. 5DX14L	-		42
60	010-50802-50	STUD	2	M8X1. 25X25L	-		53
70	010-50604-10	STUD	2	M6X1. 0X107L	-		168
75	044-00600-20	OIL SEAL	1	6DX10DX2. 5B	-		242
80	040-11400-30	PLUG	2	M14X1. 5X20DX12L	-		126
90	021-11400-20	GASKET	2	14. 1DX19DX2. 3T	-		32
210	277-11002-21	MAIN BEARING COVER C	1	FLANGE 4-5/16-24UNF	-		7,140
220	044-02502-10	OIL SEAL	1	25DX41. 25DX6B	-		525
230	X60-02501-40	BALL BEARING	1	25DX52DX15B	7762-		630
270	277-63601-23	OIL GAUGE	2	M18X1. 5 L=70+18	-		252
280	021-31600-20	GASKET	2	16DX23DX1. 2T RUBBER	-	X21-31600-20	37
300	001-04083-50	FLANGE BOLT	6	M8X1. 25X16DX35L	-		68
610	278-13010-11	CYLINDER HEAD CP	1		-		9,975
620	277-15001-33	GASKET (HEAD)	1	T=0. 2	-		315
630	011-00802-40	FLANGE BOLT	4	M8X1. 25X16DX68L	-		168
631	011-00803-10	FLANGE BOLT	1	M8X1. 25X16DX33L	-		95
680	277-15503-01	ROCKER COVER CP	1		-		1,680
690	277-16001-13	GASKET (ROCKER COVER)	1	T=0. 5	-		221
700	277-15011-03	PIPE KNOCK	2	10. 3DX8. 5DX14L	-		42
710	011-00600-20	FLANGE BOLT	4	M6X1. 0X14DX12L	-		84
960	277-99001-37	GASKET SET	1		-		819

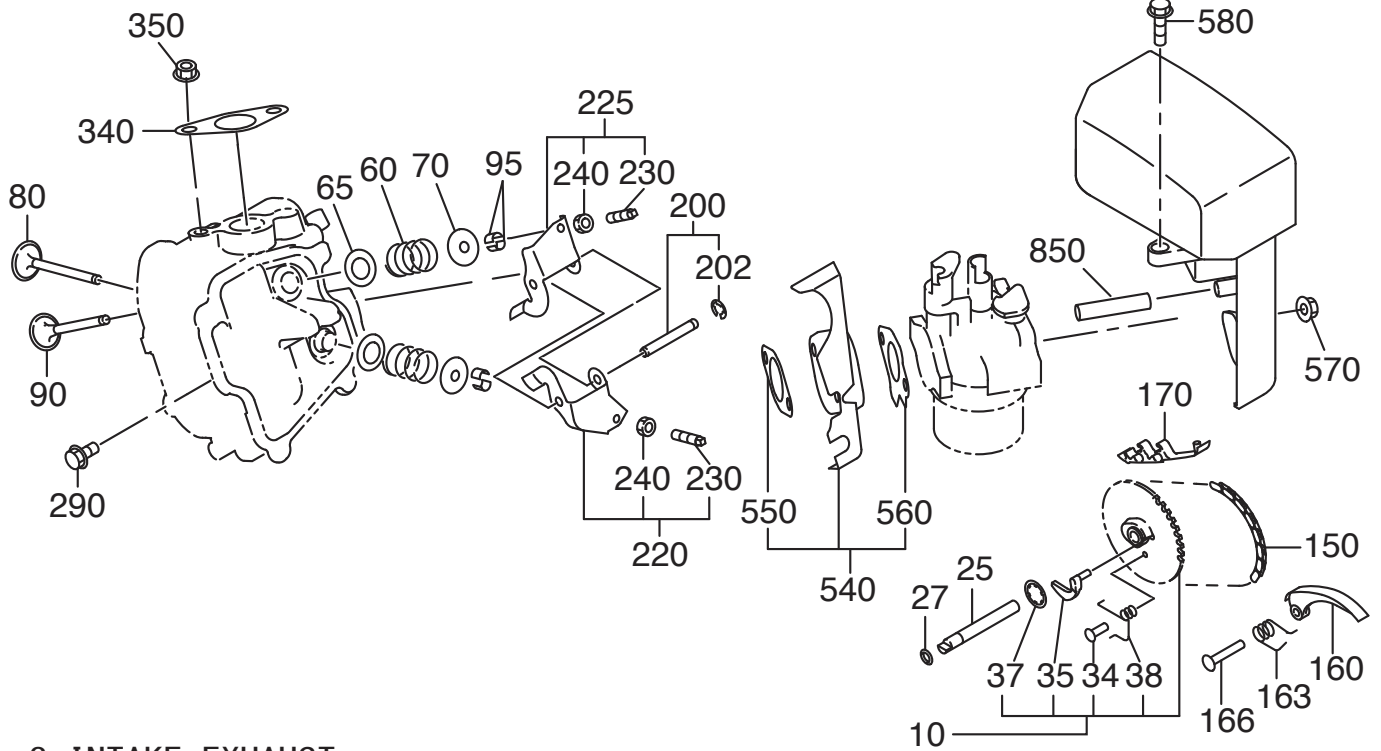
## 2. CRANKSHAFT, PISTON



## 2. CRANKSHAFT, PISTON

REF.	PART NUMBER	PART NAME	QTY	REMARKS	CODE NO.	INTERCHANGE P/NO.	UNIT P
10	278-20901-61	CRANKSHAFT CP	1	L=260 DU 19.05DX58.5	-		14,910
50	018-01400-20	FLANGE NUT	1	M14X1.5X28DX12H	-		115
70	032-30300-10	WOODRUFF KEY	1	3BX6HX16D	-		147
80	206-26001-13	KEY	1	4.75BX4.7HX35L	-		262
90	020-00801-40	WASHER	1	8.5DX28DX4.5T	-		126
100	011-00803-80	FLANGE BOLT	1	5/16X16DX25L	-		1,260
310	278-22501-10	CONNECTING ROD AY	1	91.3CDX25B 30D-16D	-		4,987
311	278-22502-00	CONNECTING ROD AY	1	0.25 U. S.	-		5,197
320	277-23001-03	CONNECTING ROD BOLT	2	M6X1.0X13DX33L	-		157
350	277-23301-13	PISTON PIN	1	16DX11DX48.5L	-		451
360	277-23401-J3	PISTON	1	STD (67DX40H)	-		2,152
361	277-23403-J3	PISTON	1	0.25 O. S. (67DX40H)	-		2,257
362	277-23404-J3	PISTON	1	0.50 O. S. (67DX40H)	-		2,257
370	277-23511-37	PISTON RING SET	1	STD (67D) OIL EXPANDE	-		2,467
371	277-23512-17	PISTON RING SET	1	0.25 O. S. OIL EXPAND	-		2,572
372	277-23513-17	PISTON RING SET	1	0.50 O. S. OIL EXPAND	-		2,572
380	056-51600-10	CLIP	2	17.1DX1.4D	-		52

### 3 INTAKE EXHAUST



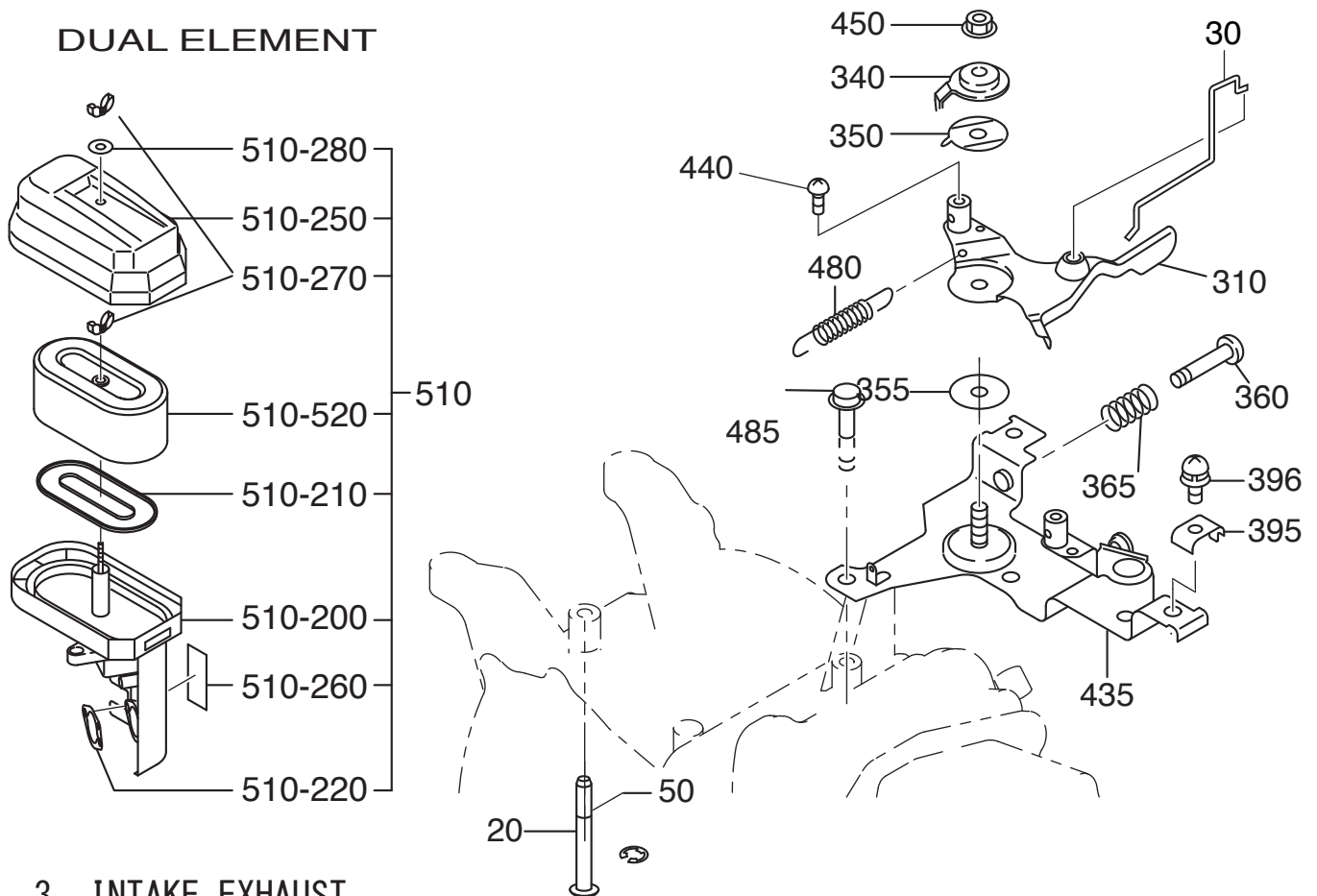
### 3 INTAKE EXHAUST

REF.	PART NUMBER	PART NAME	QTY	REMARKS	CODE NO.	INTERCHANGE P/NO.	UNIT P
10	278-31602-01	CAM SHAFT CP	1	85DX2.9B N=40			5,985
25	277-35101-03	PIN (CAM SHAFT)	1	9DX78.5L			504
27	024-00600-10	O RING	1	5.8DX-.6D			126
34	277-38601-03	PIN (SPRING)	1	4DX8DX9L			47
35	277-36401-03	RELEASE LEVER	1				756
37	278-38801-03	SPACER CAM	1				1,575
38	277-38702-03	RETURN SPRING	1	5.1DX0.6DX4.4L N=7			105
60	279-33601-03	VALVE SPRING	2	19.2DX2.3DX27.4L			157
65	278-38802-03	SPACER SPRING	2				95
70	269-33701-03	SPRING RETAINER	2				252
80	279-33401-H3	INTAKE VALVE	1	28, 5DX5.5DX67.8L			1,029
90	279-33501-H3	EXHAUST VALVE	1	26, 5DX5.5DX67.8L			1,628
95	132-10KA0-31	COLLET-VALVE	4				73
150	278-35601-11	TIMING CHAIN CP	1	92 LINK			1,627
160	277-36911-03	TENTIONER	1				210
163	277-37101-03	SPRING (TENTIONER)	1	10DX1.8DX14L N=4.5			147
166	277-36902-03	PIN (TENTIONER)	1	6DX13DX34L			157
170	277-36913-13	CHAIN GUIDE	1				178
200	277-35003-03	PIN (ROCKER) CP	1	6DX46L			178
202	003-13050-00	CLIP	1	5DX11DX0.6T			15
220	277-36201-00	ROCKER ARM (IN) AY	1				1,417
225	277-36202-00	ROCKER ARM (EX) AY	1				1,312
230	014-90500-20	ADJUST SCREW	1	M5X0.5X23L			126
240	017-00500-30	NUT	1	M5X0.5X4.1H			42
290	011-00600-20	FLANGE BOLT	1	M6X1.0X14DX12L			84
340	277-35201-13	GASKET (MUFFLER)	1	T=.2 26D 9DX58P			126
350	980-20082-80	FLANGE NUT	2	M8X1.25X17DX7.5H			147
540	279-32905-H0	INSULATOR AY	1				8,085
550	279-35903-J3	GASKET2 (INSULATOR)	1	T=0.5			58
560	279-35902-J3	GASKET1 (INSULATOR)	1	T=0.5			68
570	002-38060-00	FLANGE NUT	2	M6X1.0X13DX6H			57
580	011-00600-50	FLANGE BOLT	1	M6X1.0X13DX20L			73
850	085-10800-00	RUBBER PIPE		8DX11DX1000L			760

### 3 INTAKE EXHAUST

### 4 GOVERNOR OPERATION

#### DUAL ELEMENT



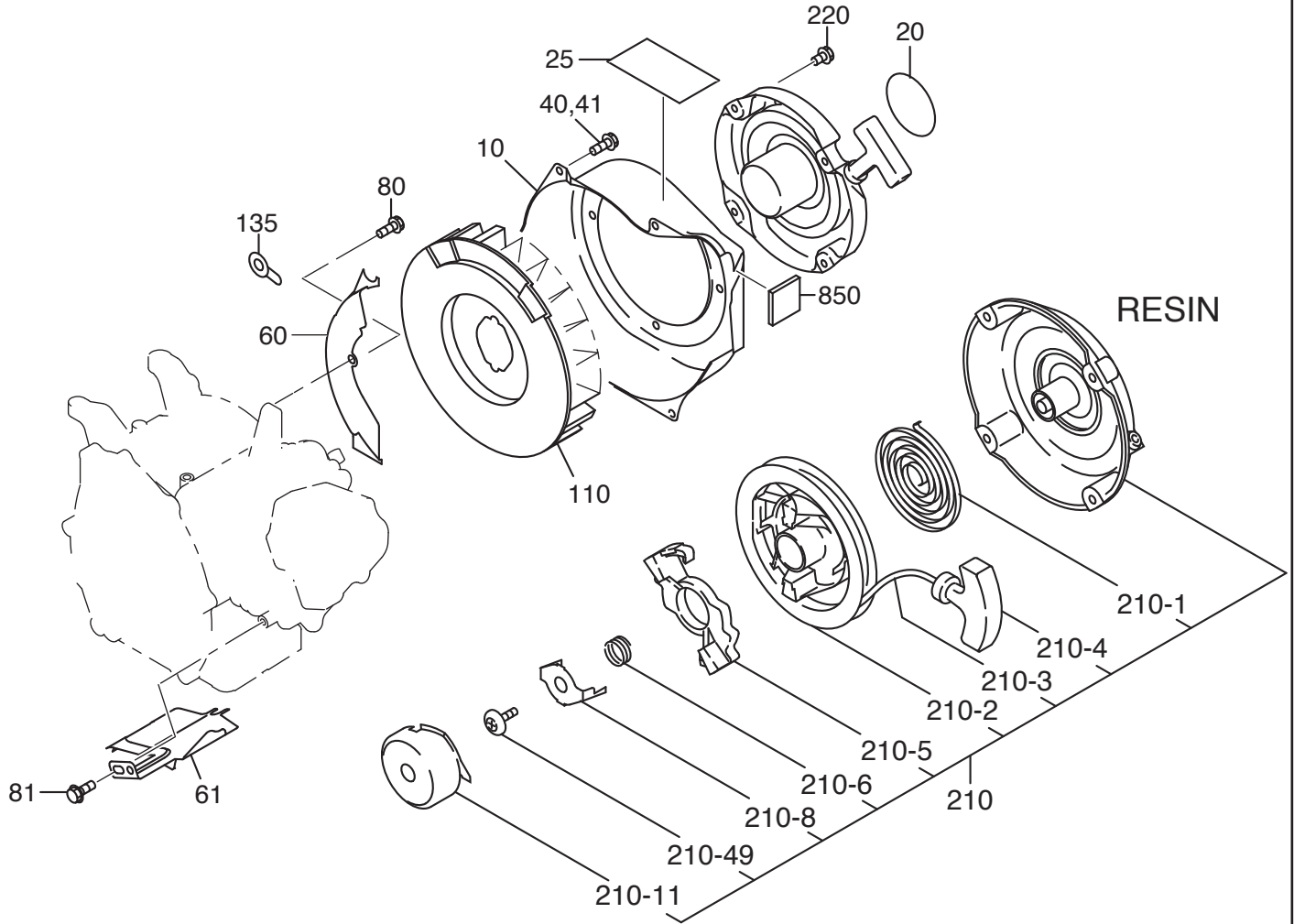
### 3 INTAKE EXHAUST

REF.	PART NUMBER	PART NAME	QTY	REMARKS	CODE NO.	INTERCHANGE P/NO.	UNIT P.
510	279-32615-60	AIR CLEANER AY	1	DUAL	-		6,720
-200	279-32634-28	ELBOW COMP. AIR/G	1				2,258
-210	279-32720-08	PACKING	1				357
-220	279-32650-18	GASKET	1				357
-250	279-32643-18	COVER	1				1,628
-260	279-32730-08	LABEL	1				100
-270	279-32740-08	NUT	1				158
-520	279-32607-17	ELEMENT SET	1	DUAL	-		3,150

### 4 GOVERNOR OPERATION

20	277-48601-03	PIN(BLIND)	1	6DX44L	-		179
30	277-42703-11	DIRECT ROD CP	1		-		326
50	003-13050-00	CLIP	1	5DX11DX0.6T	-		16
310	277-43303-01	SPEED CONT. LEVER CP	1	W/SWIVEL	-		546
340	277-43502-03	STOP PALET	1		-		231
350	277-44501-03	WASHER	1		-		57
355	021-70600-70	FRICTION WASHER	1	6.5DX24DX0.8T NYLON	-		42
360	004-31062-50	SCREW	1	M6X1.0X25L	-		21
365	237-45004-23	SPRING (ADJUST)	1	6.9DX0.9DX20L N=7	-		42
395	277-43902-03	CLAMP	1		-		210
396	013-10500-30	SCREW AND WASHER AY	1	M5X0.8X20L W/W, SW	-		32
435	277-46002-02	SPEED CONT. BRKT. UN	1		-		588
440	004-31040-80	SCREW	1	M4X0.7X8L	-		21
450	002-35060-00	SELF LOCK NUT	1	M6X1.0X6.8H	-		73
480	277-45103-03	RETURN SPRING	1	7DX0.7DX28L N=15	-		326
485	011-00600-20	FLANGE BOLT	2	M6X1.0X14DX12L	-		84

## 5 COOLING STARTING

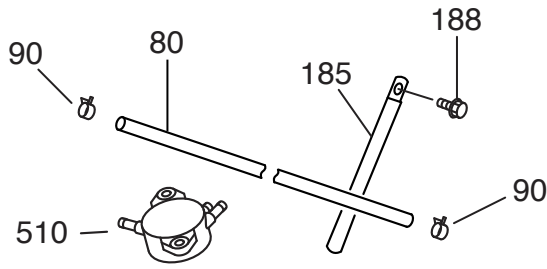


## 5 COOLING STARTING

REF.	PART NUMBER	PART NAME	QTY	REMARKS	CODE NO.	INTERCHANGE P/NO.	UNIT P
10	278-51282-01	BLOWER HOUSING CP	1		-		3,728
20	073-20054-70	LABEL (TRADE MARK)	1	60D	-		189
25	073-20049-80	LABEL(CAUTION)	1	38X80 JAPAN	-		231
40	011-00600-30	FLANGE BOLT	4	M6X1.0X14DX14L	-		73
41	011-00600-20	FLANGE BOLT	1	M6X1.0X14DX12L	-		84
60	277-52712-03	BAFFLE 1 (CASE)	1		7778-		567
61	277-52702-03	BAFFLE 2 (HEAD)	1		-		1,102
81	011-00600-20	FLANGE BOLT	1	M6X1.0X14DX12L	-		84
110	278-54101-03	COOLING BLOWER	1		-		1,155
135	277-75501-03	CLAMP (SEL)	1		-		95
220	013-00602-81	BOLT AND WASHER AY	4	M6X1.0X14L W/SW	-		32
850	277-59606-03	SPONGE 6	1		-		693

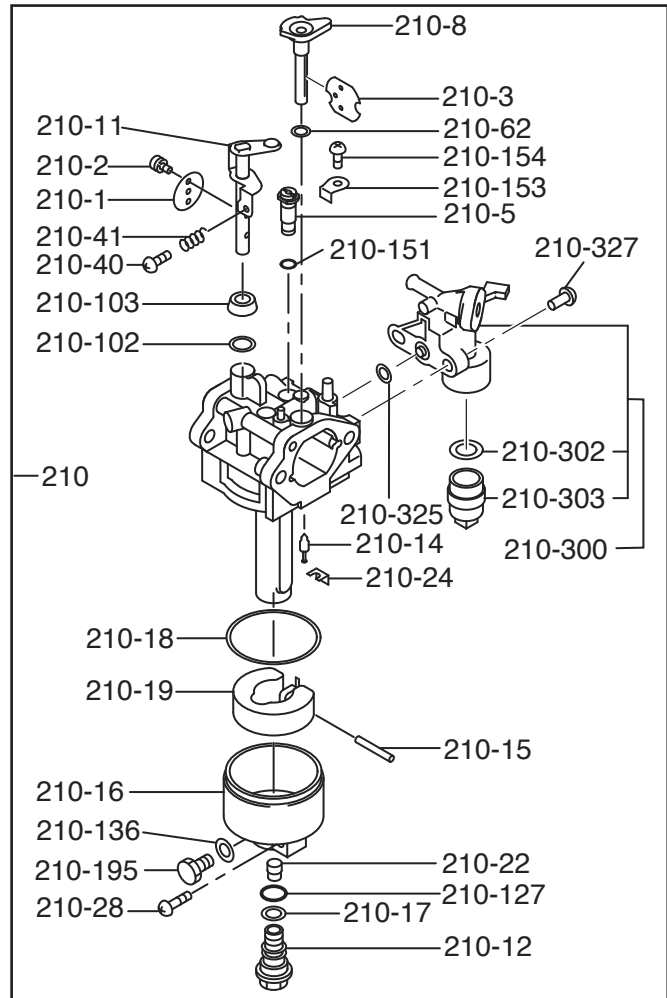
210	278-50301-00	RECOIL STARTER AY	1	160PD RESIN	-		7,560
- 1	226-50716-08	SPIRAL SPRING	1		-		1,785
- 2	277-50121-08	REEL	1		-		2,205
- 3	277-50110-08	STARTER ROPE	1		-		840
- 4	281-50300-08	STARTER KNOB	1		-		462
- 5	281-50325-08	RATCHET	1		-		357
- 6	281-50330-08	FRICTION SPRING	1		-		305
- 8	281-50340-08	FEICTION PLATE	1		-		305
- 11	278-50146-08	STARTER PULLEY	1		-		1,523
- 49	281-50351-08	CENTER SCREW	1		-		305

## 6 FUEL LUBRICANT



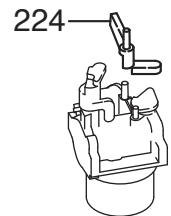
MAIN JET

	PART NUMBER	PART NAME		UNIT P
210-22	226-62412-08	#80.0		880
210-22	277-62402-08	#81.3		880
210-22	278-62400-08	#82.5		880
210-22	277-62405-08	#83.8	EX/KX 標準	880
210-22	277-62403-08	#85.0		880
210-22	277-62406-08	#86.3		880
210-22	267-62408-08	#88.8		880
210-22	267-62409-08	#90.0		880
210-22	254-62402-08	#91.3		880
210-22	266-62402-08	#92.5		880
210-22	267-62404-08	#93.8		880
210-22	246-62403-08	#95.0		880
210-22	267-62410-08	#96.3		880
210-22	254-62403-08	#97.5		880
210-22	254-62401-08	#98.8		880
210-22	267-62402-08	#100.0	EH41標準	880
210-22	254-62404-08	#101.3		880
210-22	267-62401-08	#102.5		880
210-22	254-62406-08	#103.8		880



## 6 FUEL LUBRICANT

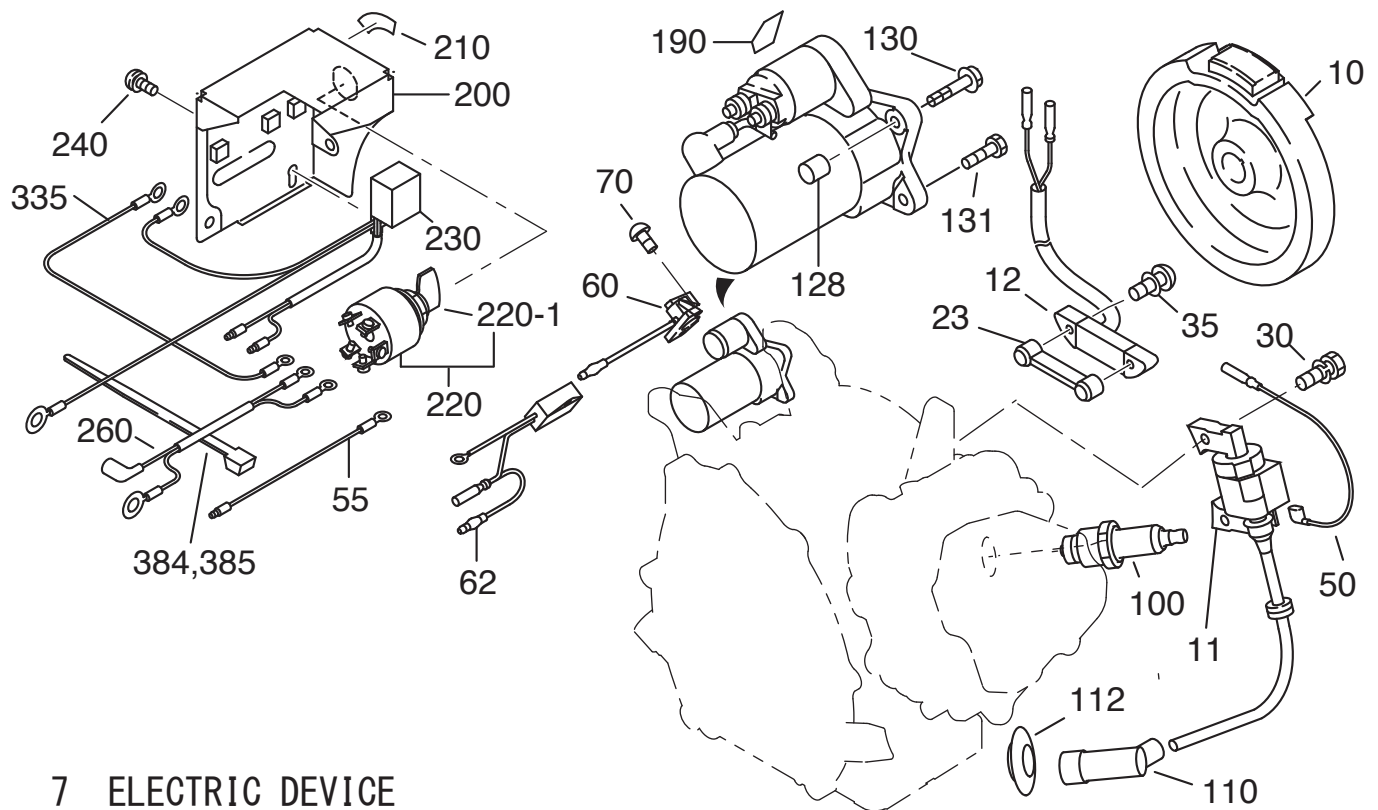
REF.	PART NUMBER	PART NAME	QTY	REMARKS	INTERCHANGE P/NO.	UNIT P
80	085-10612-60	RUBBER PIPE	1	6DX11DX300L	085-19600-00	1,365
90	056-11000-30	HOSE CLAMP	2	10DX8BX1T		58
185	056-60002-50	CLAMP	1	6. 5DX10BX95LX0. 6T		126
188	011-00600-20	FLANGE BOLT	1	M6X1. 0X14DX12L		84
224	277-43801-01	CHOKE LFVER CP	1			336
510	33K-62201-00	FUEL PUMP CP	1			2,678
210	278-62351-00	CARBURETOR AY	1			8,505



REF.	PART NUMBER	PART NAME	QTY	UNIT P
210-1	279-62536-08	THROTTLE VALVE	1	567
- 2	209-62351-08	SCREW	2	58
- 3	279-62527-08	CHOKE VALVE	1	336
- 5	279-62421-08	PILOT JET #40	1	840
- 8	279-62522-08	CHOKE LEVER	1	609
- 11	279-62533-08	THROTTLE SHAFT-A	1	1,995
- 12	278-62451-08	JET HOLDER	1	1,260
- 14	224-62305-08	NEEDLE VALVE	1	2,100
- 15	214-62515-08	PIN	1	210
- 16	278-62505-08	FLOAT BODY-A	1	1,680
- 17	248-62451-08	WASHER	1	74
- 18	206-62540-08	PACKING	1	263
- 19	234-62506-08	FLOT-A	1	1,628
- 22	277-62405-08	MAIN JET #83. 8	1	872
- 24	226-62701-18	CLIP	1	315
- 28	214-62454-08	SCREW	1	515

REF.	PART NUMBER	PART NAME	QTY	UNIT P
- 40	106-62556-08	SCREW	1	74
- 41	283-62357-08	SPRING	1	315
- 62	236-62680-08	SEAL	1	294
-102	246-62390-08	SEAL	1	168
-103	279-62551-08	RING	1	336
-127	242-62313-08	O-RING	1	90
-136	209-62346-08	WASHER	1	42
-151	106-62384-08	O-RING	1	126
-153	279-62360-08	PLATE	1	336
-154	279-62351-08	SCREW	1	210
-195	278-62450-08	BOLT	1	504
-300	279-62103-10	COCK BODY-A	1	1,040
-302	277-62110-18	PACKING	1	137
-303	277-62100-18	CUP	1	273
-325	277-62552-08	O-RING	1	315
-327	165-62377-08	SCREW	2	58



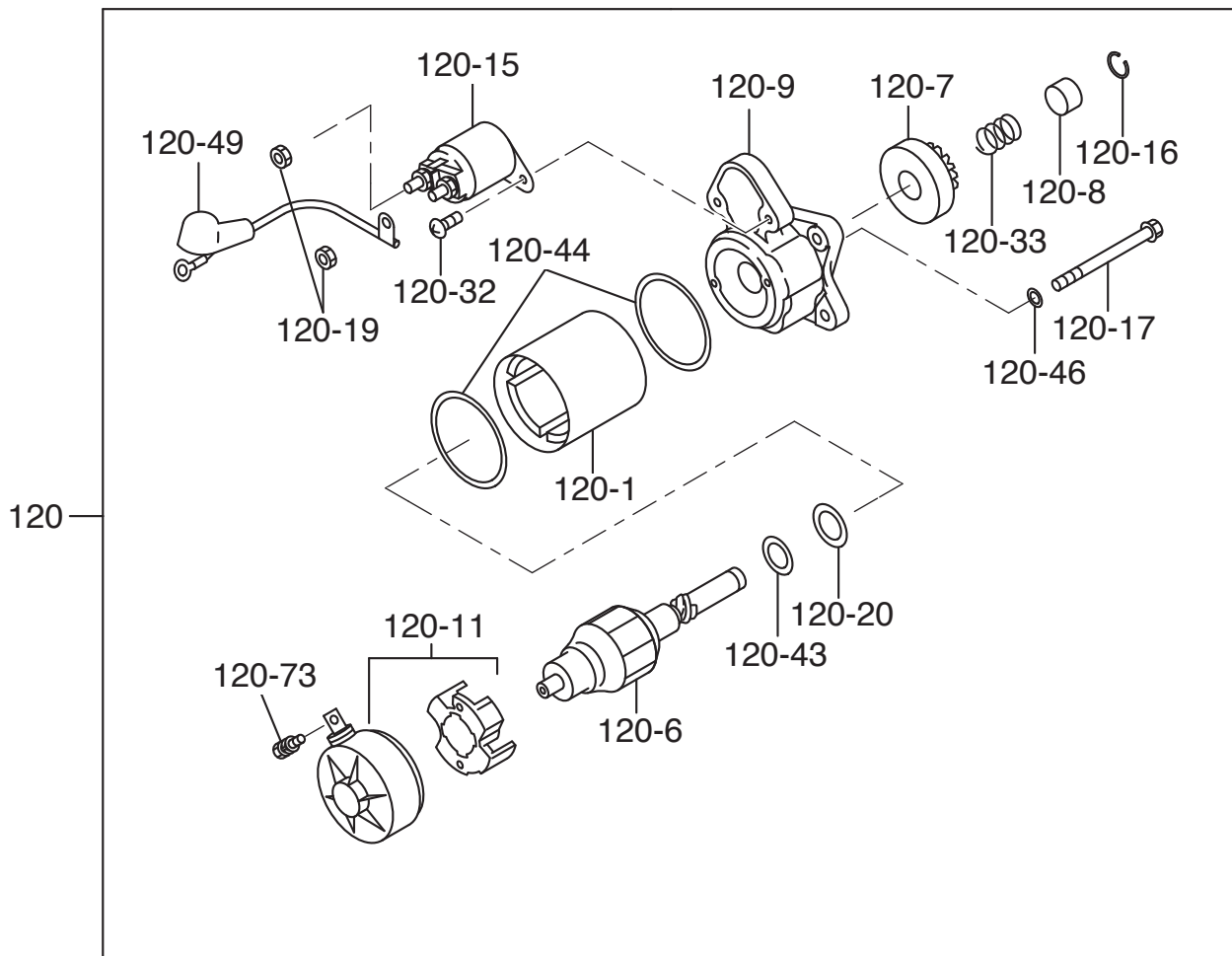


## 7 ELECTRIC DEVICE

REF.	PART NUMBER	PART NAME	QTY	R E M A R K S	CODE NO.	INTERCHANGE P/NO.	UNIT P
10	278-79274-01	FLYWHEEL CP	1	W/RING GEAR MF5368K	7527-		22,050
11	277-79431-11	IGNITION COIL CP	1	MARK BM3803	-		6,405
12	277-79302-01	LAMP COIL CP	1		7527-		5,250
23	277-79501-03	SPACER	1		7527-		557
30	001-14062-50	BOLT AND WASHER AY	2	M6X1. 0X25L W/W, SW	-		32
35	001-13064-00	BOLT AND WASHER AY	2	M6X1. 0X40L SW	-		42
50	279-73105-H1	WIRE 5 CP	1	L=510 BLACK	-		693
55	277-73105-01	WIRE 5 CP	1	L=170 BLACK	-		242
62	278-75601-10	SPEED LIMITER AY	1		-		18,585
100	065-01408-00	SPARK PLUG	1	NGK BR7HS	-		473
110	065-50002-70	SPARK PLUG CAP	1		-		315
112	277-55201-03	GROMMET, PLUG CAP	1		-		473
128	980-40081-10	STR PIN-8X10	1		-		74
130	011-00604-70	FLANGE BOLT	1	M6X1. 0X13DX20L	-		90
131	011-00604-80	FLANGE BOLT	1	M6X1. 0X13DX30L	-		95
190	073-20044-80	LABEL (BATTERY)	1		-		158
200	277-75101-01	CONTROL BOX CP	1		-		2,153
210	073-20044-60	LABEL (STARTER SWITCH)	1		-		210
220	066-00003-30	SWITCH	1		-		4,463
-1	066-00099-80	KEY, SWITCH	2	MARK 103	-		924
230	277-71903-01	REGULATOR CP	1		-		6,300
240	011-00600-20	FLANGE BOLT	2	M6X1. 0X14DX12L	-		84
260	277-73103-11	WIRE 3 CP	1	L=230	-		567
335	277-73104-01	WIRE 4 CP	1	L=150 BLACK	-		221
384	056-30000-60	WIRE BAND	2	4. 7BX1. 3TX120L	-		179



## 7 ELECTRIC DEVICE



## 7 ELECTRIC DEVICE

REF.	PART NUMBER	PART NAME	QTY	REMARKS	CODE NO.	INTERCHANGE P/NO.	UNIT P
120	277-70502-00	STARTING MOTOR AY	1		-		27,615
- 1	277-70550-08	YOKE ASSY	1		-		11,865
- 6	277-70551-08	ARMATURE ASSY	1		-		11,865
- 7	277-70520-08	CLUTCH, SUB-ASSY	1		-		10,605
- 8	227-70561-08	NUT, PINION STOP	1		-		378
- 9	277-70501-08	HOUSING ASSY	1		-		4,937
- 11	277-70502-08	FLAME ASSY	1		-		1,943
- 15	277-70573-08	CONTACTOR ASSY	1		-		11,760
- 16	227-70562-08	RING, SNAP	1		-		100
- 17	277-70570-08	BOLT, THROUGH	2		-		210
- 19	254-70576-08	NUT	2		-		100
- 20	227-70573-08	WASHER, PLATE SK	1		-		189
- 32	277-70574-08	SCREW, W/WASHER	2		-		105
- 33	277-70560-08	SPRING	1		-		263
- 43	227-70574-08	COLLAR, ARMATURE	1		-		693
- 44	227-70572-08	O RING	2		-		100
- 46	277-70571-08	O RING	2		-		284
- 49	277-70572-08	WIRE, SUB-ASSY	1		-		630
- 73	227-70577-08	BOLT, W/WASHER	1		-		116